



# Dairy Knowledge at Your Fingertips | Ontario and Western Provinces

August 2020

## HEIFER RAISING

### Six Tips for Choosing Which Heifers to Raise



When calvings are more abundant, like in August and September, you may wish to select which heifers are more valuable to keep in the herd.

This is especially important when forage inventories are at an all time low in certain regions.

[Learn more](#)

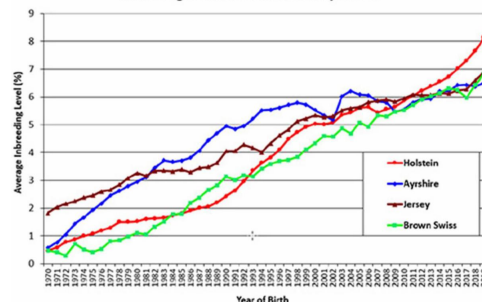


**WHAT'S NEW ON OUR WEBSITE?**  
Some of our tools are now available in Spanish for foreign workers.

More and more dairy producers rely on foreign workers on-farm.

To facilitate their integration, our website now offers a brand new section containing [practical information sheets](#) in Spanish. Simply click on the topic of interest and then on the specific link to access the Spanish version.

Inbreeding Trends in Canadian Dairy Breeds



## GENETICS Inbreeding Update - August 2020

Each year, based on official animal registration and pedigree information within its database, Lactanet Canada computes current statistics related to the level of inbreeding within the Canadian cow population of each dairy breed.

Here are the most recent statistics based on females born in Canada since 1970 up to and including registered heifers born in 2019.

[Learn more](#)

[Learn more](#)

## TECHNO-ECONOMIC MANAGEMENT

### Is there a sure-fire strategy for maximizing the profitability of a dairy farm?



We have a tendency to seek out THE secret to success or THE most successful strategy.

Can a specific management style really guarantee greater profitability?

[Learn more](#)

## HERD MANAGEMENT TOOLS

### DairyComp Tutorial: Platform Mobile App



Tired of repetitively going to the office for your DairyComp data?

Get a sneak peek to see how the Platform Mobile App makes herd management even more convenient! [Learn more.](#)

[View the complete video](#)