

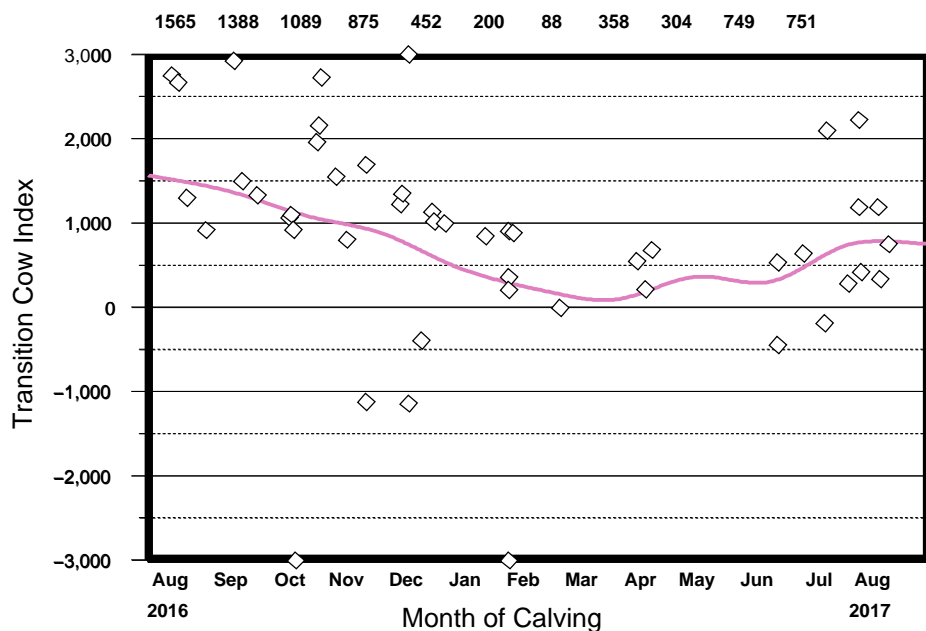
# TRANSITION COW INDEX™

## Transition Dashboard

NAME	HERD NUMBER	PAGE	TEST DATE
Patrick Producer	QC 99999	1 of 1	10 Aug 2017
			SERVICE
			Supervised



### TRANSITION COW INDEX™



Averages at the top are rolling 90 day averages.

**Interpretive comments:**

Transition Cow Index provides a quantitative measurement of the effectiveness of your dry and fresh cow management programs.

**Annual average Transition Cow Index: 831**

**Percent of cows with negative index: 17**

Percent of second & later lactation fresh cows tested with a Transition Cow Index: 87

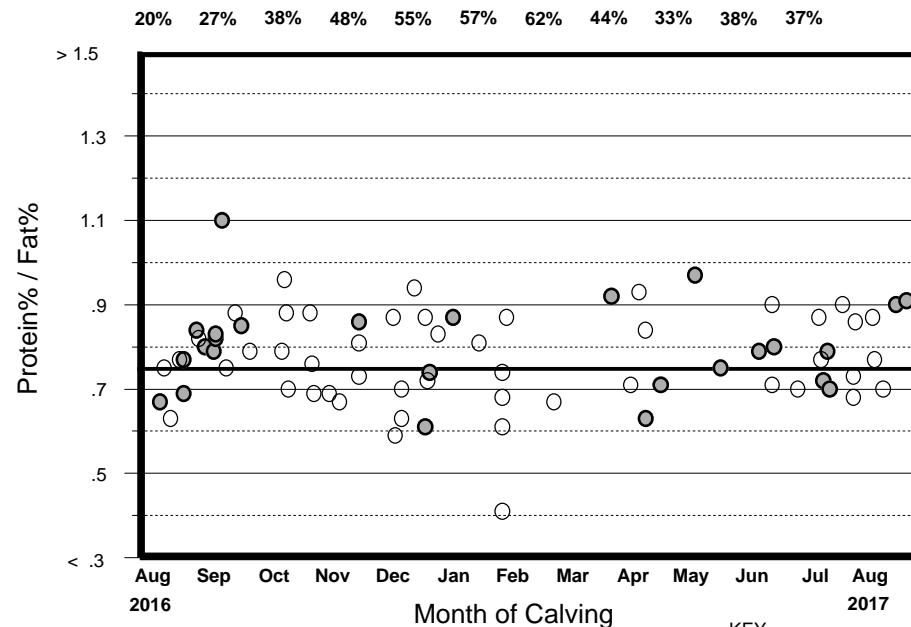
Number of second & later lactation cows freshening in the last 12 months : 55

**Industry benchmarks of average annual Transition Cow Index (80th percentile is desirable):**

80th Percentile	Average	20th Percentile
534	202	-135

Transition Cow Index™ Patent Pending Wisconsin Alumni Research Foundation

### RATIO OF FIRST TEST PROTEIN% TO FAT% (PFR)



Percentages at the top of the chart are the 90 day rolling percentage of first test PFR < 0.75 for all cows.

**KEY**  
 ● First Lactation  
 ○ 2nd & Greater lactation

**Interpretive comments:**

Research indicates that cows having a first test PFR < 0.75 are at higher risk for subclinical ketosis. If more than 40% of first tests are < 0.75, improvement of the transition management programs may reduce the risk of metabolic problems.

**Annual percent First Test PFR less than 0.75, 1st lactation: 31**

**Annual percent First Test PFR less than 0.75, 2nd + lactation: 44**

**Annual percent First Test PFR less than 0.75, all cows: 39**

**Industry benchmarks of herd % PFR < 0.75 (80th percentile is desirable):**

80th Percentile	Average	20th Percentile
24	37	50